

Clarinete si \flat

Ludwig van Beethoven

(1770-1827)

Trois duos pour clarinette et basson
WoO 27

arrangés pour clarinette et clarinette basse

I

Allegro commodo

f

5

dolce

10

p

16

21 **Solo**

25 **Solo**

p *p* *p* *mf*

30 *cresc.*

34 *tr*

dolce

39 *cresc.*

43 *rf* *f* *tr*

p

47

51 *f*

56 *p* *tr*

62 *tr* *cresc.*

67 *p cresc. p dolce cresc.*

73 *f*

78

82 *p cresc.*

86 *dolce f*

90 *p cresc.*

96 *tr* *dolce*

101 *rf cresc. f*

104 *tr dolce*

109 *cresc. dolce cresc. f*

Larghetto sostenuto

Solo

7

p

13

Solo

dolce

19

Solo

25

30

p *cresc.*

Detailed description: This section contains six staves of music for 'Larghetto sostenuto'. The key signature has two flats (B-flat and E-flat), and the time signature is 3/4. The first staff starts with a 'Solo' marking. The second staff has a 'p' dynamic marking. The third staff continues the melody. The fourth staff has a 'Solo' marking and a 'dolce' dynamic marking. The fifth staff has a 'Solo' marking. The sixth staff has 'p' and 'cresc.' dynamic markings.

RONDO Allegretto

Solo

dolce

6

mf

11

16

dolce *f* **Fine**

21

f *tr* 3

26

f *tr*

Detailed description: This section contains six staves of music for 'RONDO Allegretto'. The key signature has one sharp (F-sharp), and the time signature is common time (C). The first staff starts with a 'Solo' marking and a 'dolce' dynamic marking. The second staff has an 'mf' dynamic marking. The third staff continues the melody. The fourth staff has a 'dolce' dynamic marking and ends with a 'f' dynamic marking and the word 'Fine'. The fifth staff has a 'f' dynamic marking and a 'tr' (trill) marking. The sixth staff has a 'f' dynamic marking and a 'tr' (trill) marking.

31
dolce

36

41
f

45

50
dolce

56

62
cresc. *f*

67
tr *tr*

72
espressivo

78

83

89
ff *dolce*

95
cresc.

Da Capo al Segno

II

Allegro affettuoso

p

8 *Solo*

13

17 *p*

24 *cresc.* *dolce*

31

35

40 *cresc.* *dolce*

46 *mf*

52 *p* *mf* *p* *f*

ARIA
Larghetto

dolce

5

13

p *cresc.*

RONDO - Allegretto moderato

dolce

8

16 *f*

23 **Fine**

29 *dolce*

37 *p*

III

Allegretto sostenuto

p

9 *f*

13 *dolce*

18 *cresc.* *f*

25 *p*

32 *mf*

39 *tr* *tr*

43 *p*

48 *p*

56 *f*

71 Solo

77

85

91

96

101

108

111

115

119 *tr* *dolce*

125

130

Aria con Variazioni
Andantino con moto

Solo

Musical notation for the main theme of the Aria, measures 1-12. The piece is in 2/4 time with a key signature of two flats (B-flat and E-flat). The melody is written on a single treble clef staff. It begins with a quarter note G4, followed by a series of eighth and sixteenth notes, including a trill on G4 in measure 4. The phrase concludes with a double bar line and repeat dots.

Var. I

Musical notation for Variation I, measures 13-28. This variation maintains the melodic contour of the main theme but replaces the eighth and sixteenth notes with dotted quarter notes. It features a trill on G4 in measure 14 and concludes with a double bar line and repeat dots.

Var. II
Solo

Musical notation for Variation II, measures 29-45. This variation is characterized by a dense texture of triplets. The melody is written on a single treble clef staff. It begins with a quarter note G4, followed by a series of eighth notes in triplet groups. The piece concludes with a trill on G4 in measure 44 and a final triplet of eighth notes. The notation includes numerous triplet markings (the number 3) and a trill marking (tr) in measure 44.

Var. III

Solo



53

*p*
Solo

61



Var. IV

Solo



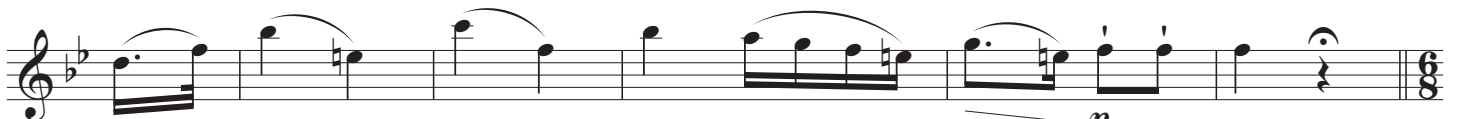
68



Solo

dolce*mf*

76

*dolce**f**>* *p*

Allegro assai

*f*

93



102

*tr**tr*

109

*tr*